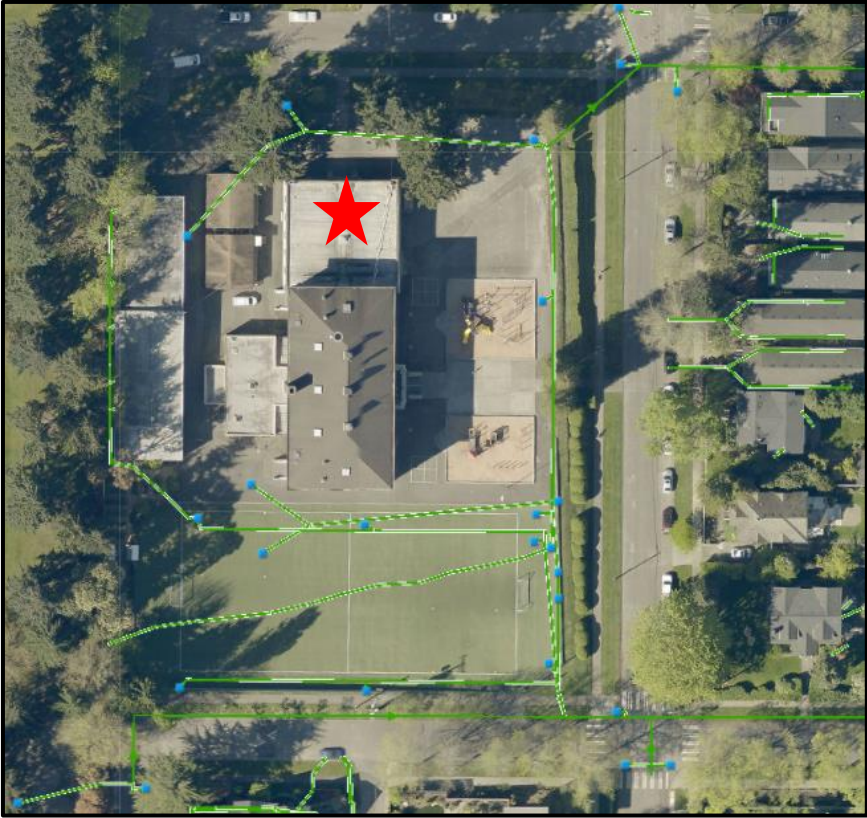


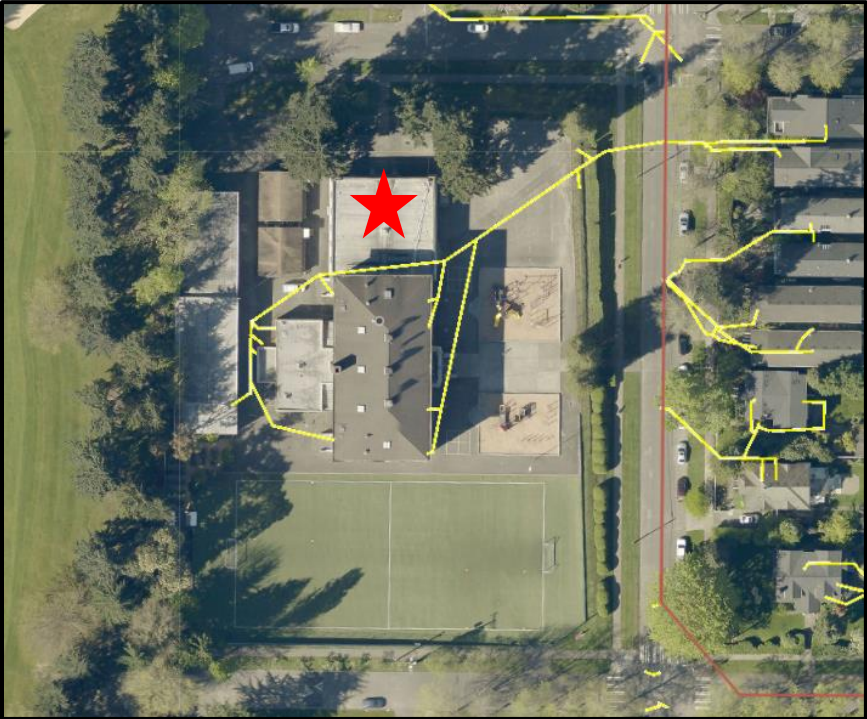
McGilvra Elementary's Stormwater Only Pipes



- ON THIS MAP:**
- Blue Dots** are Storm Drains
 - Green Lines** are Stormwater Pipes
 - Green Lines with inset arrows** are larger stormwater pipes that leave the right side of the map.

See “**McGilvra Neighborhood Stormwater Pipes**” map to figure out where the stormwater pipes empty.

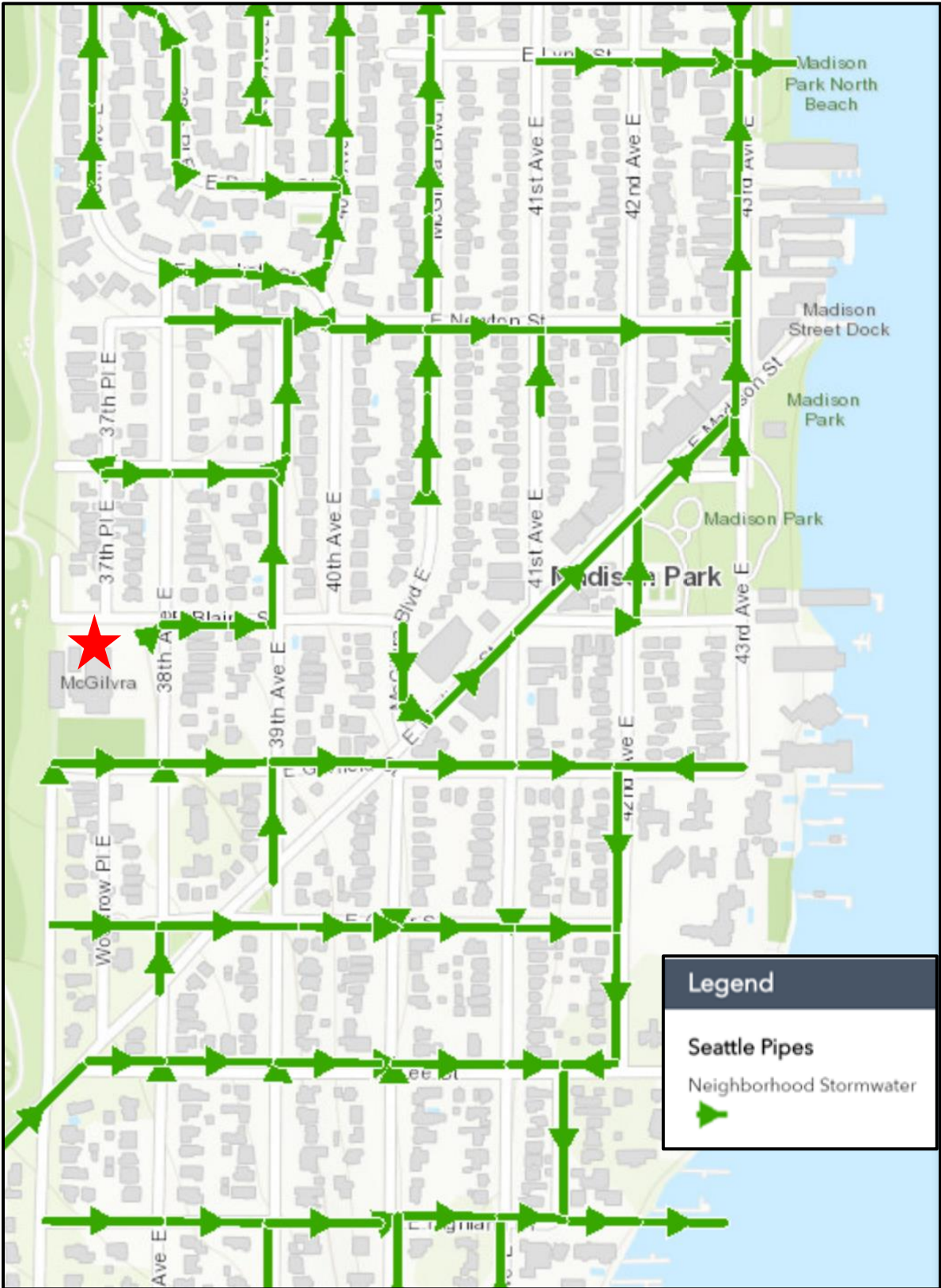
McGilvra Elementary's Combined Pipes



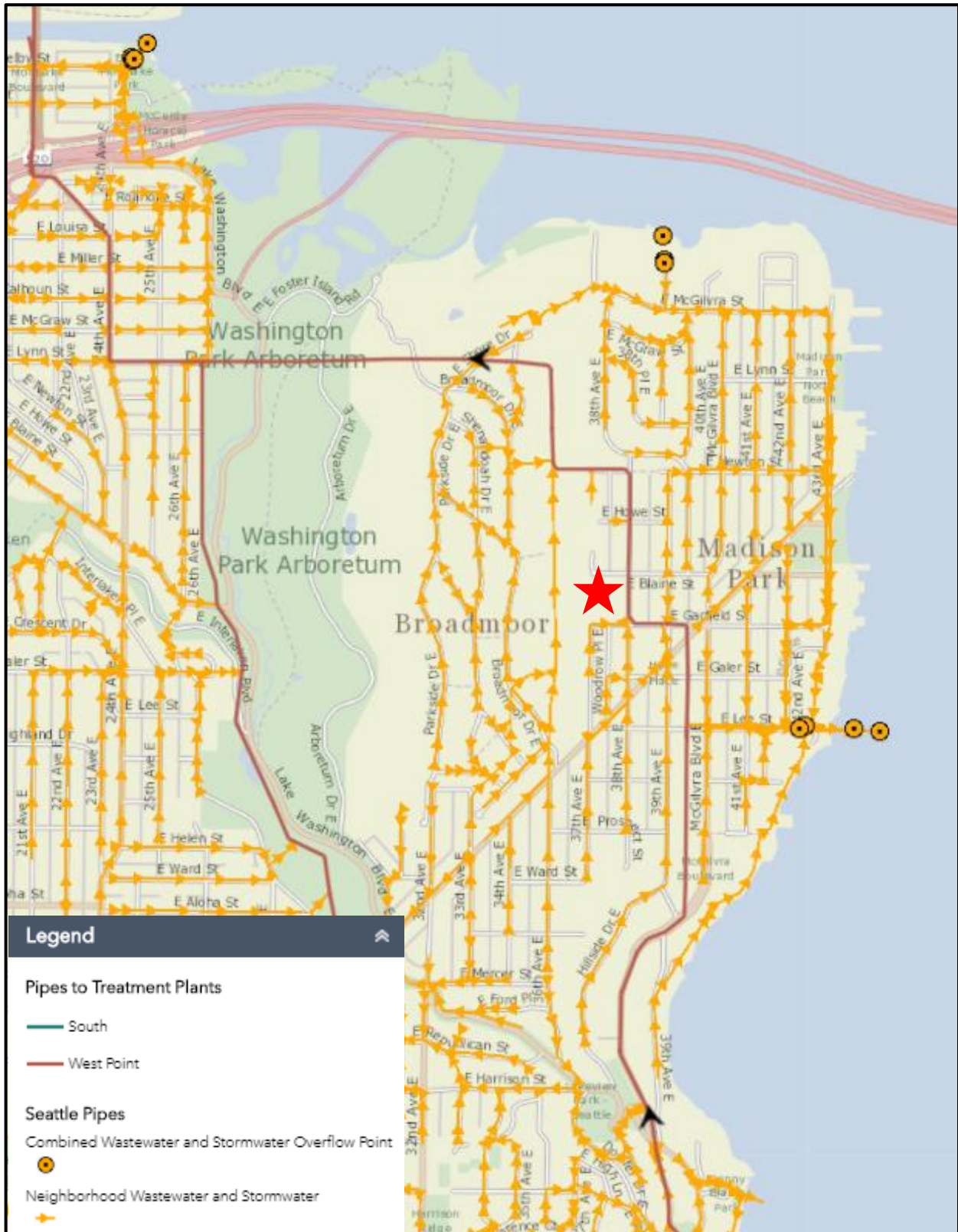
- ON THIS MAP:**
- Yellow Lines** are pipes with wastewater and gutter drains from main building's roof.
 - Red Line** is a large pipe that flows towards the top of the map.

See “**McGilvra Neighborhood Combined Pipes and Overflows**” map to see where combined water goes.

McGilvra Neighborhood Stormwater Only Pipes



McGilvra Neighborhood Combined Pipes and Overflows



Treatment Plant Pipes and Overflows

